

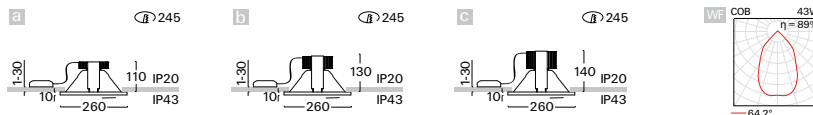
# V274

## LED downlights

downlight with electronic control gear • control gear option • assembling and covering rings made of aluminium cast • aluminium ring for mounting of complements • colour option • efficient high quality aluminium reflector • optional decorative complements • Rated median operational life-time of luminaire 50 000h L70/B50 at Ta = 25°C • Standard Deviation Colour Matching MacAdam 3-step • quick installation without tools • suitable for assembly in concrete housing • increased IP in enclosed ceilings



WF



Order code	Pict.	Power	Flux	Tc	Ra	kg
V274sCWl.110/WF	a	1 x 10 W	1400 lm	3000 K	≥ 80	0,8
V274sCCl.110/WF	a	1 x 10 W	1450 lm	4000 K	≥ 80	0,8
V274sCDI.110/WF	a	1 x 10 W	1450 lm	5000 K	≥ 80	0,8
V274sCWl.114/WF	a	1 x 14 W	1950 lm	3000 K	≥ 80	0,8
V274sCCl.114/WF	a	1 x 14 W	2000 lm	4000 K	≥ 80	0,8
V274sCDI.114/WF	a	1 x 14 W	2000 lm	5000 K	≥ 80	0,8
V274sCWl.120/WF	a	1 x 20 W	2600 lm	3000 K	≥ 80	0,8
V274sCCl.120/WF	a	1 x 20 W	2650 lm	4000 K	≥ 80	0,8
V274sCDI.120/WF	a	1 x 20 W	2650 lm	5000 K	≥ 80	0,8
V274sCWl.129/WF	b	1 x 29 W	3500 lm	3000 K	≥ 80	0,9
V274sCCl.129/WF	b	1 x 29 W	3600 lm	4000 K	≥ 80	0,9
V274sCDI.129/WF	b	1 x 29 W	3600 lm	5000 K	≥ 80	0,9
V274sCWl.137/WF	b	1 x 37 W	4200 lm	3000 K	≥ 80	0,9
V274sCCl.137/WF	b	1 x 37 W	4300 lm	4000 K	≥ 80	0,9
V274sCDI.137/WF	b	1 x 37 W	4300 lm	5000 K	≥ 80	0,9
V274sCWl.143/WF	b	1 x 43 W	4900 lm	3000 K	≥ 80	0,9
V274sCCl.143/WF	b	1 x 43 W	5000 lm	4000 K	≥ 80	0,9
V274sCDI.143/WF	b	1 x 43 W	5000 lm	5000 K	≥ 80	0,9
V274sCWl.148/WF	c	1 x 48 W	5900 lm	3000 K	≥ 80	1,0
V274sCCl.148/WF	c	1 x 48 W	6050 lm	4000 K	≥ 80	1,0
V274sCDI.148/WF	c	1 x 48 W	6050 lm	5000 K	≥ 80	1,0

### Higher colour rendering index value - CRI (only for Tc 3000K, 4000K)

D

Example of order code assembly: Ra ≥90

V274sDCI.143/WFD3

### Special chromaticity / spectrum of LED source

B / I / S / H / K / T / R / Y / F / Z / A / V / P / 6

Example of order code assembly: spectrum for meat and sausages

V274sCRI.143/WFD3

### Dimmable version

A / C / D / T / L / X / B

Example of order code assembly: dimmable DALI

V274sCCD.143/WFD3

### Emergency version

N / H / F / G

Example of order code assembly: emergency operation

V274sCCIN.143/WFD3



LED COB

W3

S3

D3

B3



230V-50Hz

PDF

### Accessories



ZPK-10  
page 144



KZMK-10  
page 144



KALK-10  
page 144



KRP  
page 144



KV-10  
page 714

### Complements



A1/T1-03  
clear glass



A3/T3-03  
opal glass



P1-03  
prisma



F-03  
colour filters

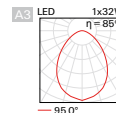
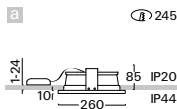
# V274

## LED downlights

recessed round light fitting with electronic control gear • control gear option • assembling and covering rings made of aluminium cast • colour option • high quality aluminium reflector with outer smooth opal, prismatic clear or micro-prismatic opal diffuser made of PMMA • rated median operational life-time of luminaire 50 000h L70/B50 at Ta = 25°C • Standard Deviation Colour Matching MacAdam 3-step • increased IP in closed ceilings • quick installation without tools • suitable also for assembly in concrete housing



A3



Order code	Pict.	Power	Flux	Tc	Ra	kg
<a href="#">V274sLWI.114/..</a>	a	1 x 14 W	1700 lm	3000 K	≥ 80	0,8
<a href="#">V274sLCI.114/..</a>	a	1 x 14 W	1790 lm	4000 K	≥ 80	0,8
<a href="#">V274sLDI.114/..</a>	a	1 x 14 W	1840 lm	5000 K	≥ 80	0,8
<a href="#">V274sLWI.120/..</a>	a	1 x 20 W	2360 lm	3000 K	≥ 80	0,8
<a href="#">V274sLCI.120/..</a>	a	1 x 20 W	2480 lm	4000 K	≥ 80	0,8
<a href="#">V274sLDI.120/..</a>	a	1 x 20 W	2550 lm	5000 K	≥ 80	0,8
<a href="#">V274sLWI.126/..*</a>	a	1 x 26 W	3330 lm	3000 K	≥ 80	0,8
<a href="#">V274sLCI.126/..*</a>	a	1 x 26 W	3490 lm	4000 K	≥ 80	0,8
<a href="#">V274sLDI.126/..*</a>	a	1 x 26 W	3590lm	5000 K	≥ 80	0,8
<a href="#">V274sLWI.132/..</a>	a	1 x 32 W	3830 lm	3000 K	≥ 80	0,8
<a href="#">V274sLCI.132/..</a>	a	1 x 32 W	4010 lm	4000 K	≥ 80	0,8
<a href="#">V274sLDI.132/..</a>	a	1 x 32 W	4130 lm	5000 K	≥ 80	0,8

(\*) phase dimming not possible

### Higher colour rendering index value - CRI

M

Example of order code assembly: [Ra ≥90](#)

[V274sMWI.126/A3.D3](#)

### Dimmable version

A / B / D / T / L / X

Example of order code assembly: [dimmable DALI](#)

[V274sLWD.126/A3.D3](#)

### Emergency version

N / H / F / G

Example of order code assembly: [emergency operation](#)

[V274sLWIN.126/A3.D3](#)

### Increased protection of luminaire under the ceiling

54

Example of order code assembly: [IP54](#)

[V274sWLWI.126/A3.D3-54](#)



LED plate

- W3
- S3
- D3
- B3



230V-50Hz

PDF

### Optional types of acrylic glass



A3 acrylic P1 prisma M3 microprisma

Example of order code assembly:  
[acrylic glass - opal](#)

[V274sLWI.126/A3.D3](#)

PDF

### Accessories



ZPK-10 page 144 KZMK-10 page 144 KALK-10 page 144 KRK page 144 KV-10 page 714

# V274

## LED downlights

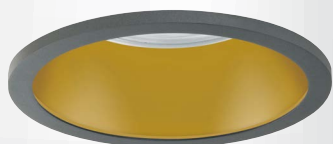
recessed round light fitting with electronic control gear • control gear option • passive cooling module • assembling and covering rings of aluminium die-cast • colour option • high quality aluminium reflector smooth with inner or outer smooth opal, microprismatic opal or clear prismatic diffuser of PMMA • smooth reflector in black, gold or white colour or also RAL on request • rated median operational life-time of luminaire 50 000h L70/B50 at Ta = 25°C • Standard Deviation Colour Matching MacAdam 3-step • increased IP in closed ceilings • quick installation without tools • suitable also for assembly in concrete housing



HDA3



SBA3



HGA3



SWA3

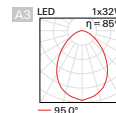
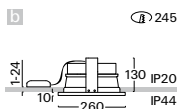


LED plate

- W3
- S3
- D3
- B3



IP20 230V-50Hz



### Order code

Order code	Pict.	Power	Flux	Tc	Ra	kg
V274sLWI.114/... ..	b	1 x 14 W	1700 lm	3000 K	≥ 80	0,9
V274sLCI.114/... ..	b	1 x 14 W	1790 lm	4000 K	≥ 80	0,9
V274sLDI.114/... ..	b	1 x 14 W	1840 lm	5000 K	≥ 80	0,9
V274sLWI.120/... ..	b	1 x 20 W	2360 lm	3000 K	≥ 80	0,9
V274sLCI.120/... ..	b	1 x 20 W	2480 lm	4000 K	≥ 80	0,9
V274sLDI.120/... ..	b	1 x 20 W	2550 lm	5000 K	≥ 80	0,9
V274sLWI.126/... ..*	b	1 x 26 W	3330 lm	3000 K	≥ 80	0,9
V274sLCI.126/... ..*	b	1 x 26 W	3490 lm	4000 K	≥ 80	0,9
V274sLDI.126/... ..*	b	1 x 26 W	3590lm	5000 K	≥ 80	0,9
V274sLWI.132/... ..	b	1 x 32 W	3830 lm	3000 K	≥ 80	0,9
V274sLCI.132/... ..	b	1 x 32 W	4010 lm	4000 K	≥ 80	0,9
V274sLDI.132/... ..	b	1 x 32 W	4130 lm	5000 K	≥ 80	0,9

(\*): phase dimming not possible

### Optional types of reflectors

HD / HG / SB / SW

Example of order code assembly: [smooth reflector](#)

[V274sLWI.126/HDA3.D3](#)

### Higher color rendering index value - CRI

M

Example of order code assembly: [Ra ≥90](#)

[V274sMWI.126/HDA3.D3](#)

### Dimmable version

A / B / D / T / L / X

Example of order code assembly: [dimmable DALI](#)

[V274sLWD.126/HDA3.D3](#)

### Emergency version

N / H / F / G

Example of order code assembly: [emergency operation](#)

[V274sLWIN.126/HDA3.D3](#)



### Optional types of glass



A3

acrylic

P1

prisma

M3

microprisma

Example of order code assembly:

[acrylic glass - opal](#)

[V274sLWI.126/HDA3.D3](#)



### Accessories



ZPK-10

page 144

KZMK-10

page 144

KALK-10

page 144

KRK

page 144

KV-10

page 714

# EXPLANATORY NOTES

for order code assembly

1	2	3	4	5	6	7	8	9	10	11			
V	299	s	LW	DN	.	124	A	/	HD	A3	.	W3	B

1	MOUNTING CATEGORY			2	PRODUCT CODE		3	CONFIGURATION OF LIGHT FITTING					
V	recessed	L	track	299	type marking of light fitting		s	control gear on cable (part of l. fitting)					
S	ceiling	Z	pendant	014	type marking of insert		c	control gear in luminaire (part of l. fitting)					
N	wall	C	insert of fitting	etc.			a	control gear in adapter (part of l. fitting)					
F	floor						r	control gear in rosette (part of l. fitting)					
							-	without control gear					
4	TYPE OF LIGHT SOURCE (SOCKET)												
Q0	LED PAR16 (GU10)			E2	LED A60, A65 (E27)		E2	LED PAR20, 30, 38 (E27)					
4a	TYPE OF LED LIGHT SOURCE			4b	CHROMATICITY OF LED SOURCE		4b	SPECTRUM OF LED SOURCE					
A	LED COIN 111 COB, COIN 111 AC Ra >80			I	warm white "interna" (2700 K)		R	spectrum for meat and sausages					
B	LED COIN 111 COB Ra >90			W	warm white (3000 K)		Y	spectrum for pastry, delicatessen and cheese					
F	LED COIN 50 COB Ra >80			B	white (3500 K)		F	spectrum for fish					
G	LED COIN 50 COB Ra >90			C	cool white (4000 K)		Z	spectrum for fruits and vegetables					
N	LED COIN 35 COB Ra >80			D	daylight white (5000 K)		A	spectrum for art (Ra>97)					
P	LED COIN 35 COB Ra >90			S	cool daylight (6500 K)		V	spectrum for clothing, fashion					
L	LED panel Ra >80			K	tunable white - commercial (2700 K-6500 K)		P	spectrum for plant growth					
M	LED panel Ra >90			T	dim to warm (dimming to warm chroma.)								
C	LED COB Ra >80												
D	LED COB Ra >90												
5	TYPE OF CONTROL GEAR							6	NUMBER AND OUTPUT OF LIGHT SOURCE				
BASIC CONFIGURATION				EMERGENCY CONFIGURATION				NUMBER OF SOURCES, POWER OF FITTING					
I	non-dimmable constant current driver			N	emergency 1h		108	1 x 8 W					
U	non-dimmable constant voltage driver			H	emergency 3h		114	1 x 14 W					
A	dimmable analog 1-10V			F	emergency 1h with autotest		229	2 x 29 W					
D	dimmable DALI			G	emergency 3h with autotest		337	3 x 37 W					
S	dimmable DSI			Z	electronic address module		443	4 x 43 W					
C	dimmable with CORRIDOR function			P	central battery system								
T	dimmable using button 230V												
W	dimmable using push-button on luminaire												
L	phase dimmable												
X	dimmable Tunable white DALI												
B	dimmable Casambi (Bluetooth)												
7	TYPE OF REFLECTOR							TYPE OF DIFFUSER					
SS	super spot - beam angle <10°			MDG	medium - beam angle 21-34° (gold)		HD	smooth divided					
SP	spot - beam angle 10-20°			FLG	flood - beam angle 35-49° (gold)		HG	powder coated gold (G1)					
MD	medium - beam angle 21-34°			HU	smooth UGR < 19		SB	powder coated black sand (B3)					
FL	flood - beam angle 35-49°			MU	matt UGR < 19		SW	powder coated white sand (W3)					
WF	wideflood - beam angle ≥ 50°						xx	optional RAL colour					
8	TYPE OF COVER GLASS / FILTER												
T1	tempered glass - clear			F4	blue filter		FH	honeycomb louvre					
T3	tempered glass - opal			F5	red filter		F9	linear spread lens*					
A1	acrylic glass - clear			F6	green filter								
A3	acrylic glass - opal			F7	yellow filter								
M1	acrylic microprisma - clear							* for use with SP/MD reflector only					
M3	acrylic microprisma - opal												
P1	acrylic prisma - clear												
9	COLOUR AND FINISH			10	SPECIAL VERSION								
W3	white sand interior/exterior			B	for assembly in concrete housing								
S3	silver sand interior			F	for assembly in facade insulation								
B3	black sand interior/exterior			KRP	for assembly in lamella ceilings								
D3	anthracite sand dark interior/exterior			P	for assembly in sheet metal ceilings								
xx	optional RAL colour												