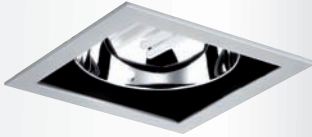


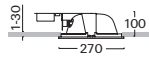
V280

Downlights

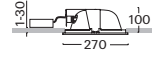
recessed square light fitting with control gear • control gear option • quality aluminium reflector • horizontal position of light sources • assembling and covering frames of aluminium die-cast • colour option • housing of galvanized sheet • quick installation without tool • optional decorative accessories • suitable also for assembly in concrete housing



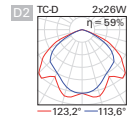
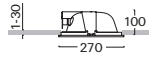
a 255x255



b 255x255



c 255x255



Order code	Pict.	Source	Output	Socket	kg
V280cD2B.113	a	TC-D	1x13 W	G24d-1	2.0
V280cD2B.118	a	TC-D	1x18 W	G24d-2	2.0
V280cD2B.126	a	TC-D	1x26 W	G24d-3	2.2
V280sD2B.213	b	TC-D	2x13 W	G24d-1	2.3
V280sD2B.218	b	TC-D	2x18 W	G24d-2	2.3
V280sD2B.226	b	TC-D	2x26 W	G24d-3	2.7
V280cD4E.113	a	TC-DEL	1x13 W	G24q-1	2.0
V280cD4E.118	a	TC-DEL	1x18 W	G24q-2	2.0
V280cD4E.126	a	TC-DEL	1x26 W	G24q-3	2.0
V280cD4M.142	a	TC-TEL	1x26/32/42 W	GX24q	2.0
V280sD4E.213	b	TC-DEL	2x13 W	G24q-1	2.0
V280sD4E.218	b	TC-DEL	2x18 W	G24q-2	2.0
V280sD4E.226	b	TC-DEL	2x26 W	G24q-3	2.0
V280sD4M.242	b	TC-TEL	2x32/42 W	GX24q	2.0
V280-E2.110	c	A60, QT32	1x100 W	E27	1.5

TC-D / G24d

TC-DEL / G24q

TC-TEL / GX24q

A60 / E27

QT 32 / E27

WB

SB

B1



IP20 / IP43 230V-50Hz

PDF Other configuration of control gears for fluorescent lamps page 248

K / A / D / S / T

Example of order code assembly: [inductive compensated](#)

[V280cD2K.113.SB](#)

PDF Emergency configuration of control gears for fluorescent lamps page 250

N / H / F / G / Z / P

Example of order code assembly: [electronic, emergency operation 1h](#)

[V280sD4EN.113.SB](#)

PDF Accessories



[ZPP - 04](#)
page 126



[KZMP - 04](#)
page 126



[KALP - 04](#)
page 126



[KRP](#)
page 126

PDF Complements - dimension 04



[QD - 04](#)
page 127



[QP - 04](#)
page 127



[ODK - 04](#)
page 127



[OPP - 04](#)
page 127



[QKV - 04](#)
page 127



[IT](#)
page 252