

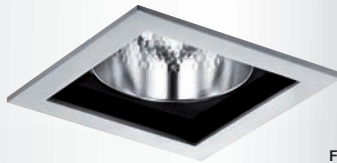
V412

Downlights

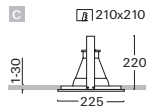
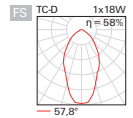
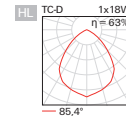
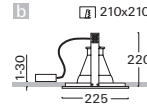
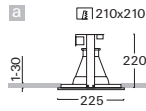
recessed square light fitting with control gear • control gear option • quality aluminium reflector smooth or facet • vertical position of light source • assembling and covering frames of aluminium die-cast • colour option • housing of galvanized sheet • quick installation without tool • optional decorative accessories • ballast for discharge lamps ordered separately • suitable also for assembly in concrete housing



HL



FS



Order code	Pict.	Source	Output	Socket	kg
V412cD2B.113/..	a	TC-D	1x13 W	G24d-1	1,5
V412cD2B.118/..	a	TC-D	1x18 W	G24d-2	1,5
V412cD2B.126/..	a	TC-D	1x26 W	G24d-3	1,5
V412cD4E.113/..	a	TC-DEL	1x13 W	G24q-1	1,3
V412cD4E.118/..	a	TC-DEL	1x18 W	G24q-2	1,3
V412cD4E.126/..	a	TC-DEL	1x26 W	G24q-3	1,3
V412cD4M.142/..	a	TC-TEL	1x26/32/42 W	GX24q	1,3
V412-X2.115/.. (*)	b	HIE	1x70/100/150 W	E27	1,3
V412-S1.110/.. (*)	b	HST-CRI	1x35/50/100 W	PG12-1	1,3
V412-E2.115/..	c	QT32, A60	1x60 -150 W	E27	1,2

(*) Control gear necessary (is ordered separately see Accessories)

Optional types of reflectors

HL / FS

Example of order code assembly: [reflector facet](#)

[V412cD2B.113/FS.SB](#)



Other configuration of control gears for fluorescent lamps

page 248

K / A / D / S / T

Example of order code assembly: [inductive compensated](#)

[V412cD2K.113/FS.SB](#)



Emergency configuration of control gears for fluorescent lamps

page 250

N / H / F / G / Z / P

Example of order code assembly: [electronic, emergency operation 1h](#)

[V412sD4EN.113/FS.SB](#)



Accessories



BMHK
page 84



BMHE
page 84



BSWK
page 84



BSWE
page 84



ZPP - 03
page 126



KZMP - 03
page 126



KALP - 03
page 126



KRP
page 126



Complements - dimension 03



QD - 03
page 127



QP - 03
page 127



ODK - 03
page 127



OPP - 03
page 127



QKV - 03
page 127



TC-D / G24d



TC-DEL / G24q



TC-TEL / GX24q



HIE / E27



HST-CRI / PG12-1



A60 / E27



QT 32 / E27



WB



SB



B1



IP20 / IP43 230V-50Hz