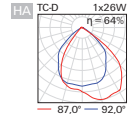
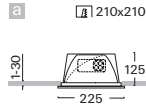
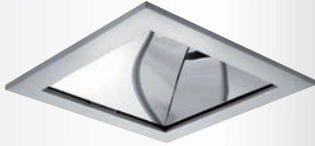


V226

Downlights

recessed square light fitting with control gear • control gear option • quality reflector of aluminium sheet • asymmetric emission characteristic • horizontal position of light source • square assembling and covering frames of aluminium die-cast • colour option • housing of galvanized sheet • quick installation without tool • optional decorative accessories • suitable also for assembly in concrete housing



Order code	Pict.	Source	Output	Socket	kg
V226cD2B.113/HA	a	TC-D	1x13 W	G24d-1	1,6
V226cD2B.118/HA	a	TC-D	1x18 W	G24d-2	1,6
V226cD2B.126/HA	a	TC-D	1x26 W	G24d-3	1,8
V226cD4E.113/HA	a	TC-DEL	1x13 W	G24q-1	1,3
V226cD4E.118/HA	a	TC-DEL	1x18 W	G24q-2	1,3
V226cD4E.126/HA	a	TC-DEL	1x26 W	G24q-3	1,3
V226cD4M.142/HA	a	TC-TEL	1x26/32/42 W	GX24q	1,3

PDF [Other configuration of control gears for fluorescent lamps](#) page 248

K / A / D / S / T

Example of order code assembly: [inductive compensated](#) [V226cD2K.113/HA.S1](#)

PDF [Emergency configuration of control gears for fluorescent lamps](#) page 250

N / H / F / G / Z / P

Example of order code assembly: [electronic, emergency operation 1h](#) [V226sD4EN.113/HA.S1](#)

TC-D / G24d

TC-DEL / G24q

TC-TEL / GX24q

W1

S1

B1



IP20 / IP43 230V-50Hz

PDF [Accessories](#)



[ZPP - 03](#)
page 126



[KZMP - 03](#)
page 126



[KALP - 03](#)
page 126



[KRP](#)
page 126

PDF [Complements - dimension 03](#)



[QD - 03](#)
page 127



[QP - 03](#)
page 127



[ODK - 03](#)
page 127



[OPP - 03](#)
page 127



[QKV - 03](#)
page 127